



**FENIX**  
Fenix Flashlight  
Illuminate Your Adventure

# TK30

Cree MC-E LED Max 630 Lumens

- Cree MC-E LED with lifespan of 50,000 hours
- Uses two CR123A batteries or one 18650 rechargeable Battery
- Uses four CR123A batteries or two 18650 rechargeable batteries (with extension tube)
- Three sets of modes, two types of output for each mode, selected by turning the bezel (Patented)
  - Performance by using two CR123A batteries, the runtime will be longer by using one 18650 rechargeable battery
  - Searching mode: Output A: 100 Lumens / 5 hours, Output B: 370 Lumens / 1 hours
  - Camping mode: Output A: 12 Lumens / 30 hours, Output B: 175 Lumens / 2.7 hours
  - Hunting mode: Output A: Strobe / 2 hours, Output B: 370 Lumens / 1 hours
  - Performance by using two 2500 mAh 18650 rechargeable Batteries (with extension tube)
  - Searching mode: Output A: 100 Lumens / 16 hours, Output B: 630 Lumens / 1.5 hours



**FENIX**  
Fenix Flashlight  
Illuminate Your Adventure

# TK30

Cree MC-E LED Max 630 Lumens

- Max beam length: 225 meters  
300 meters (with extension tube)
- Digitally regulated output - maintains constant brightness
- Intelligent memory function
- Working voltage: 3V-10V
- Weight: 183g (excluding batteries)  
215g (excluding batteries, with extension tube)
- Made of aircraft-grade aluminum
- Durable Type III hard-anodized anti-abrasive finish
- Waterproof to IPX-8 Standard
- Toughened ultra-clear glass lens with anti-reflective coating
- Tactical tail cap switch with momentary-on function
- Included accessories: lanyard, extension tube, a battery positive connector, two spare o-rings, and a rubber switch boot

Camping mode: Output A: 12 Lumens / 90 hours, Output B: 175 Lumens / 8.4 hours  
Hunting mode: Output A: Strobe / 3 hours, Output B: 630 Lumens / 1.5 hours

### Features of Fenix TK30 flashlight:

- Cree MC-E LED with 50,000 hour lifespan
- Uses two CR123A batteries or one 18650 rechargeable battery
- Uses four CR123A batteries or two 18650 rechargeable batteries (with extension tube)
- Three sets of modes, two types of output for each mode, selected by turning the bezel
- **Performance using two CR123A batteries (runtimes longer with one 18650 rechargeable battery)**
  - Searching Mode:  
Output A - 100 Lumens / 5 Hours  
Output B - 370 Lumens / 1 Hours
  - Camping Mode:  
Output A - 12 Lumens / 30 Hours  
Output B - 175 Lumens / 2.7 Hours
  - Hunting Mode:  
Output A - Strobe / 2 Hours

- Output B - 370 Lumens / 1 Hours
- **Performance using two 2500 mAh 18650 rechargeable batteries (with extension tube)**
      - Searching Mode: Output A - 100 Lumens / 16 Hours
      - Output B - **630 Lumens** / 1.5 Hours
      - Camping Mode: Output A - 12 Lumens / 90 Hours
      - Output B - 175 Lumens / 8.4 Hours
      - Hunting Mode: Output A - Strobe / 3 Hours
      - Output B - **630 Lumens** / 1.5 Hours
- Max beam length: 225 meters / 300 meters (with extension tube)
- Digitally regulated for constant output
- Intelligent memory function
- Working voltage: 3V-10V
- Weight - 183g (excluding batteries) / 215g (excluding batteries, with extension tube)
- Dimensions - 208mm (L) x 39.4mm (D)
- Made of aircraft-grade aluminum
- Durable Type-III hard-anodized finish
- Waterproof to IPX-8 standard
- Toughened ultra-clear glass lens with anti-reflective coating
- Tactical tailcap switch with momentary-on function
- Included accessories: lanyard, extension tube, a battery positive connector, two spare o-rings, and a rubber switch boot.



## TK30 Flashlight

Fenix TK30 flashlight delivers an amazing 630 lumens of brightness by utilizing a Cree MC-E Multi-chip LED, powered by two 18650 rechargeable batteries or four CR123A batteries with its extension tube fitted. Meanwhile, its runtime reaches 12 days. With its outstanding performance and brightness, TK30 meets all the requirements for a high performance flashlight. It is your best choice for outdoor searching, hunting and exploring.




### Features

- Cree MC-E LED with lifespan of 50,000 hours
- Uses two CR123A batteries or one 18650 rechargeable battery (without extension tube)
- Uses four CR123A[1] batteries or two 18650 rechargeable batteries (with extension tube)
- Three sets of modes, two types of output for each mode, selected by turning the bezel (Patented)
  - Performance by using two CR123A batteries, the runtime will be longer by using one 18650 rechargeable battery (with extension tube)

Searching mode: Output A: 100 Lumens / 16 hours,  
Output B: 370 Lumens / 1 hours

Camping mode: Output A: 12 Lumens / 90 hours,  
Output B: 175 Lumens / 2.7 hours

Hunting mode: Output A: Strobe / 2 hours,  
Output B: 370 Lumens / 1 hours

- Performance by using two 2500 mAh 18650 rechargeable Batteries (With extension tube)

Searching mode: Output A: 100 Lumens / 16 hours,  
Output B: 630 Lumens / 1.5 hours

Camping mode: Output A: 12 Lumens / 90 hours,  
Output B: 175 Lumens / 8.4 hours

Hunting mode: Output A: Strobe / 3 hours,  
Output B: 630 Lumens / 1.5 hours

- Max beam length: 225 meters (with extension tube)  
300 meters (with extension tube)
- Digitally regulated output - maintains constant brightness
- Intelligent memory function
- Working voltage: 3V-10V
- Weight: 183g (without extension tube)  
215g (with extension tube)
- Made of aircraft-grade aluminum
- Durable Type III hard-anodized anti-abrasive finish

- Waterproof to IPX-8 Standard
- Toughened ultra-clear glass lens with anti-reflective coating
- Tactical tail cap switch with momentary-on function
- Included accessories: lanyard, extension tube, a battery positive connector, two spare o-rings, and a rubber switch boot

The above-mentioned parameters are approximate and may vary between flashlights, batteries, and environments.

Note: (1) The battery voltage is very high when using four CR123A batteries. If the battery voltage is high, the brightness of the output is also higher. Output is normal when using two 18650 rechargeable batteries. Do not use 4 x 1.5 V AA 18650 rechargeable batteries.

### Operation

**Flashlight turning on/off:**  
Depress the pushbutton switch halfway to momentarily activate the light. Depress the push button completely to turn on the flashlight, the light will stay on until the pushbutton is depressed to turn off.

**Output Selecting:**  
Screw the flashlight head to tighten it for output B, unscrew the flashlight head half a turn from its stop for output A.

**Mode changing:**  
Screw the flashlight head for selecting the output from A → B → A → B. ( just like loose → tighten → loose → tighten within 0.5 seconds ) to switch to the next mode. Mode sequence: Outdoor mode → Camping mode → Hunting mode.

### Battery Replacement

Unscrew the tail cap to insert the batteries with the anode side (+) toward the light's head, screw the tail cap back on to test.



# TK30

Cree MC-E LED Max 630 Lumens

- Cree MC-E multi-chip LED
- Easy extension for powerful performance
- Multi-mode intelligent memory flashlight

Fenix TK30 flashlight utilizes a Cree MC-E multi-chip LED, normally it can be powered by two CR123A batteries or only one 18650 rechargeable battery. It delivers an amazing 630 lumens of brightness powered by four CR123A batteries or two 18650 rechargeable batteries with its extension tube fitted, meanwhile, its max runtime reaches 90 hours. With its outstanding performance and brightness, TK30 meets all the requirements for a high performance flashlight. It is your best choice for outdoor searching, hunting and exploring.



# TK30

Cree MC-E LED Max 630 Lumens

## Special features





## TK30

Cree MC-E LED Max 630 Lumens

- Cree MC-E multi-chip LED
- Excellent extension for powerful performance
- Memory mode intelligent memory flashlight

Cree MC-E multi-chip LED with powerful performance rates an amazing 630 lumens brightness



## TK30

Cree MC-E LED Max 630 Lumens

- Cree MC-E multi-chip LED
- Excellent extension for powerful performance
- Memory mode intelligent memory flashlight

Performance by using two 2500 mAh 18650 rechargeable batteries



Searching mode:  
Output B: 630 Lumens / 1.5 hours



Searching mode:  
Output A: 100 Lumens / 1A hours



Camping mode:  
Output B: 175 Lumens / 8.4 hours



Camping mode:  
Output A: 12 Lumens / 90 hours

High efficiency reflector delivers outstanding beam profile with a perfect combination of long-distance and short-distance lighting



## TK30

One MC-E LED Max 630 Lumens

- MC-E multi-chip LED
- Easy extension for powerful performance
- Memory mode intelligent memory flashlight



Uses two 18650 rechargeable batteries or four CR123A batteries by adapting with TK30 extension tube



## TK30

One MC-E LED Max 630 Lumens

- MC-E multi-chip LED
- Easy extension for powerful performance
- Memory mode intelligent memory flashlight



Max 630 Lumens (with extension tube)  
( Performance by using two 2500 mAh  
18650 rechargeable batteries )



Max 370 Lumens (without extension tube)  
( Performance by using two CR123A batteries )

Offers max 630 lumens by adapting with TK30 extension tube



# TK30

Cree MC-E LED Max 630 Lumens

- Cree MC-E multi-chip LED
- Easy extension for powerful performance
- Multi-mode intelligent memory flashlight



Max beam length: 300 meters



# TK30

Cree MC-E LED Max 630 Lumens

- Cree MC-E multi-chip LED
- Easy extension for powerful performance
- Multi-mode intelligent memory flashlight



12 Lumens / 90 hours (with extension tube)  
( Performance by using two 2500 mAh  
18650 rechargeable batteries )

12 Lumens / 30 hours (without extension tube)  
( Performance by using two CR123A batteries )

90 hours long runtime





# TK30

Cree MC-E LED Max 300 Lumens

- Cree MC-E multi-chip LED
- Easy extension for powerful performance
- Multi-mode intelligent memory flashlight



Searching



Camping



Hunting

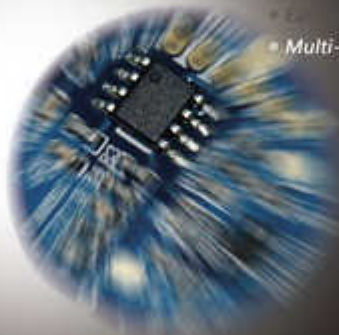
*Three sets of modes meet your versatile lighting demands*



# TK30

Cree MC-E LED Max 300 Lumens

- Cree MC-E multi-chip LED
- Easy extension for powerful performance
- Multi-mode intelligent memory flashlight



*Intelligent memory circuit memorizes last output when activating the light*





**FENIX**  
Fenix Flashlight  
Illuminate Your Adventure



**TK30**

Cree MC-E LED Max 820 Lumens

### Operation

TK30 offers three modes - Searching mode, Camping mode and Hunting mode, output A and output B included in each mode, please refer to the operation introduction.

#### ① Flashlight turning on/off:

**Momentary-on Lighting Operation:** Depress the pushbutton switch halfway to momentarily activate the light.

**Continuous Lighting Operation:** Depress the pushbutton completely to turn on the flashlight, the light will stay on until the pushbutton is depressed to turn off.

↑ Flashlight turning on    ↓ Flashlight turning off

#### ② Output selecting:

There are two types of output in each mode. Screw the flashlight head to tighten it for output B. Unscrew the flashlight head half a turn from its stop for output A.

→ Unscrew the flashlight head half a turn from its stop for output A

← Screw the flashlight head to tighten it for output B

**FENIX**  
Fenix Flashlight  
Illuminate Your Adventure



**TK30**

Cree MC-E LED Max 820 Lumens

### Operation

#### ③ Mode changing:

When you use the flashlight in current mode, screw to tighten the head twice, it goes into next mode.

##### When the flashlight is in output A:

Screw the flashlight head for selecting the output from A→B→A→B, (just like loose → tighten → loose → tighten within 0.5 seconds) to switch to the next mode.

##### When the flashlight is in output B:

Screw the flashlight head for selecting the output from B→A→B→A→B, (just like tighten → loose → tighten → loose → tighten within 0.5 seconds) to switch to the next mode.

Mode sequence: Searching mode → Camping mode → Hunting mode.